

# 5247 N 129TH STREET

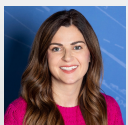
1,500 SF | \$12.00 SF/YR (NNN)

5247 NORTH 129TH STREET, OMAHA, NE 68164

# YOUR NAME HERE



[WWW.INVESTORSOMAHA.COM](http://WWW.INVESTORSOMAHA.COM)



**SYDNEY WELLER, CCIM**

402.769.7564

[sweller@investorsomaha.com](mailto:sweller@investorsomaha.com)



**JEANETTE WEBER, MPA, SIOR, CPM**

402.769.7563

[jweber@investorsomaha.com](mailto:jweber@investorsomaha.com)





# YOUR NAME HERE

5247 NORTH 129TH STREET  
EXECUTIVE SUMMARY



## OFFERING SUMMARY

LEASE RATE:	\$12.00 SF/YR NNN
Est. Op. Exp.	\$4.80 SF/YR
Available SF:	1,500 SF
Building Size:	6,959 SF
Property Type:	Office Building
Zoning:	CC

## PROPERTY OVERVIEW

Second generation space conveniently located within minutes of I-680

## PROPERTY HIGHLIGHTS

- Park at your front door convenience
- Open space, 6 private offices, and kitchenette
- Outdoor green space options
- Exterior building signage available

SYDNEY WELLER, CCIM

402.769.7564 | [sweller@investorsomaha.com](mailto:sweller@investorsomaha.com)

JEANETTE WEBER, MPA, SIOR, CPM

402.769.7563 | [jweber@investorsomaha.com](mailto:jweber@investorsomaha.com)

Information presented is deemed reliable and is subject to change. Investors Realty, Inc. makes no warranties or guarantees regarding this information.



## 5247 NORTH 129TH STREET

OMAHA, NE 68164

## BUILDING INFORMATION

Building Size	6,959 SF
Construction	Masonry
Max Contiguous	1,500 SF
Year Built	2003

## PARKING

Parking Description	Surface
Stall Count	22

## SITE INFORMATION

County	Douglas
Zoning	CC
Lot Size	0.77 Acres
Location Description	Off of N 129th Street & Fort Street

## UTILITIES

Utilities	Tenant responsible for separately metered utilities and janitorial within the suite
-----------	---

## OFFERING SUMMARY

LEASE RATE	\$12.00 SF/YR NNN
Est. Op. Exp.	\$4.80 SF/YR
Available SF	1,500 SF
Property Type	Office Building

## DEMOGRAPHICS

POPULATION	0.25 MILES	0.5 MILES	1 MILE
Total Population	727	2,910	8,922
Total Households	339	1,216	3,655
Average HH Income	\$73,076	\$78,617	\$88,357

## AVAILABLE SPACES

SPACE	SIZE	LEASE RATE	EST. OP. EXP.	EST. TOTAL / MO.	COMMENTS
5247	1,500 SF	\$12.00 SF/yr (NNN)	\$4.80	\$2,100.00	2 RR, 6 offices, kitchenette, & reception area

SYDNEY WELLER, CCIM

402.769.7564 | sweller@investorsomaha.com

JEANETTE WEBER, MPA, SIOR, CPM

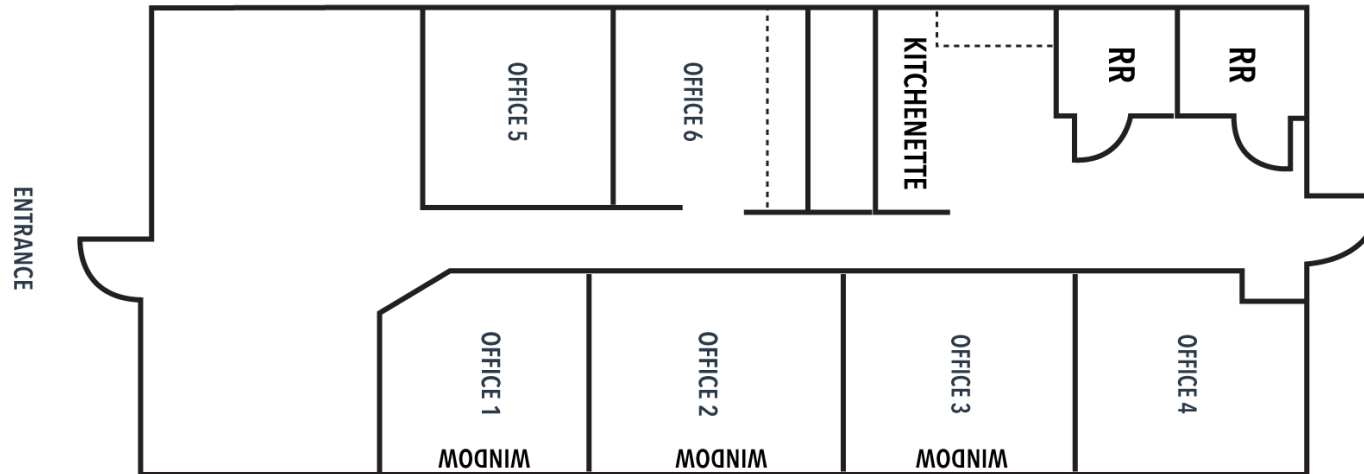
402.769.7563 | jweber@investorsomaha.com

Information presented is deemed reliable and is subject to change. Investors Realty, Inc. makes no warranties or guarantees regarding this information.



5247-49 NORTH 129TH STREET

AVAILABLE SPACES



## AVAILABLE SPACES

SPACE	SIZE	LEASE RATE	EST. OP. EXP.	EST. TOTAL / MO.	COMMENTS
5247	1,500 SF	\$12.00 SF/yr (NNN)	\$4.80	\$2,100.00	2 RR, 6 offices, kitchenette, & reception area

SYDNEY WELLER, CCIM

402.769.7564 | [sweller@investorsomaha.com](mailto:sweller@investorsomaha.com)

JEANETTE WEBER, MPA, SIOR, CPM

402.769.7563 | [jweber@investorsomaha.com](mailto:jweber@investorsomaha.com)

Information presented is deemed reliable and is subject to change. Investors Realty, Inc. makes no warranties or guarantees regarding this information.





5247 NORTH 129TH STREET  
RETAILER MAP



SYDNEY WELLER, CCIM

402.769.7564 | [sweller@investorsomaha.com](mailto:sweller@investorsomaha.com)

JEANETTE WEBER, MPA, SIOR, CPM

402.769.7563 | [jweber@investorsomaha.com](mailto:jweber@investorsomaha.com)

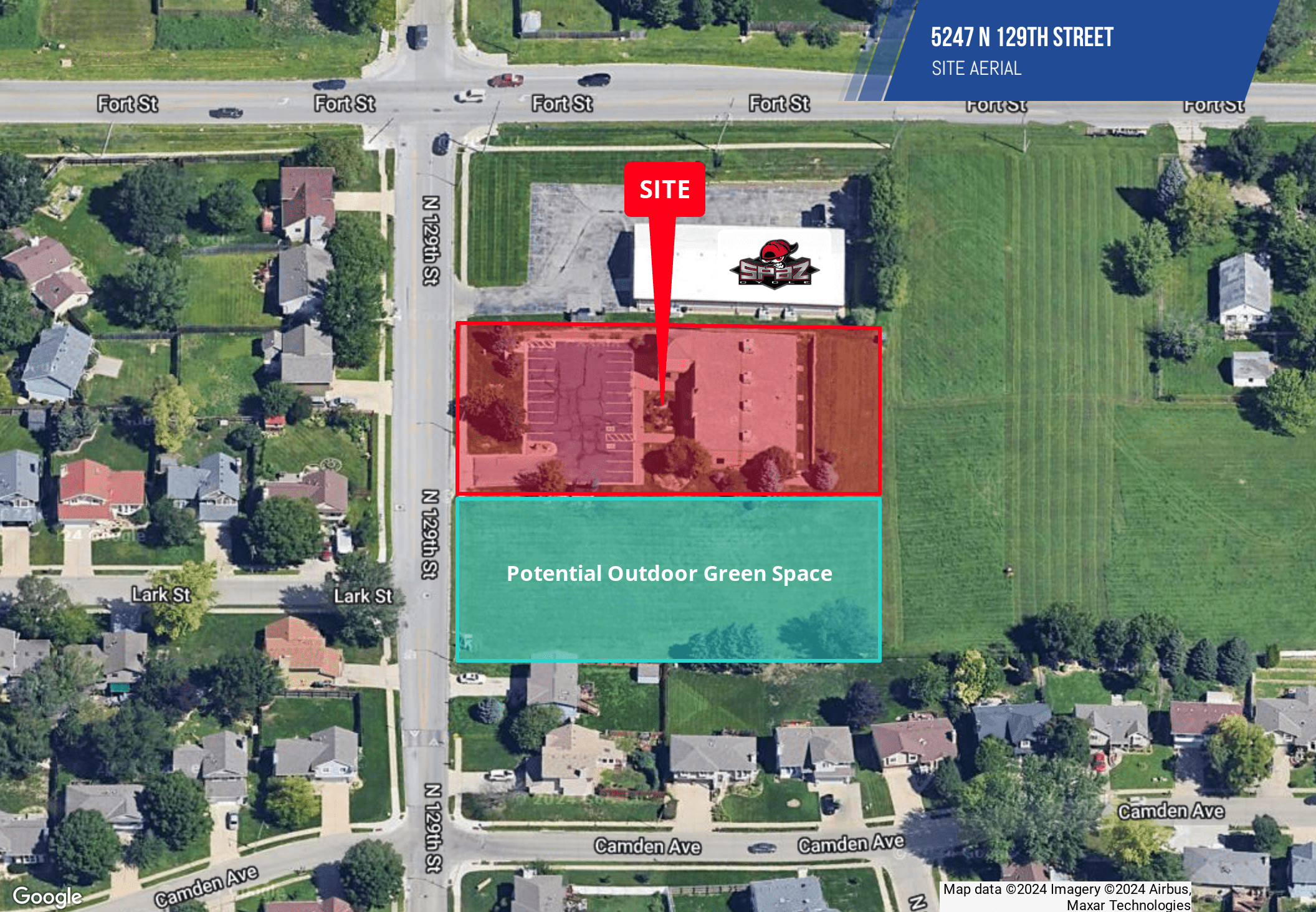
Information presented is deemed reliable and is subject to change. Investors Realty, Inc. makes no warranties or guarantees regarding this information.





5247 N 129TH STREET

SITE AERIAL



SYDNEY WELLER, CCIM

402.769.7564 | [sweller@investorsomaha.com](mailto:sweller@investorsomaha.com)

JEANETTE WEBER, MPA, SIOR, CPM

402.769.7563 | [jweber@investorsomaha.com](mailto:jweber@investorsomaha.com)

Information presented is deemed reliable and is subject to change. Investors Realty, Inc. makes no warranties or guarantees regarding this information.

Map data ©2024 Imagery ©2024 Airbus,  
Maxar Technologies

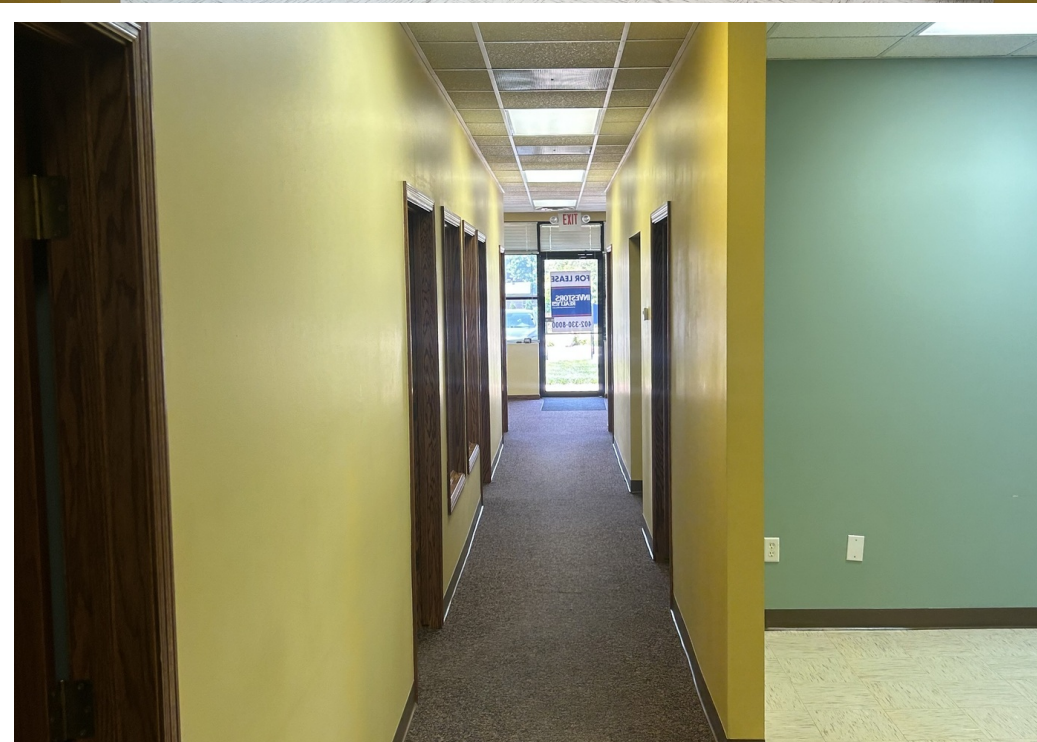






5247-49 NORTH 129TH STREET

ADDITIONAL PHOTOS - 5247



SYDNEY WELLER, CCIM

402.769.7564 | [sweller@investorsomaha.com](mailto:sweller@investorsomaha.com)

JEANETTE WEBER, MPA, SIOR, CPM

402.769.7563 | [jweber@investorsomaha.com](mailto:jweber@investorsomaha.com)

Information presented is deemed reliable and is subject to change. Investors Realty, Inc. makes no warranties or guarantees regarding this information.

